

This document describes knives and cutter heads which can be supplied with log lathe LL-41

Overview

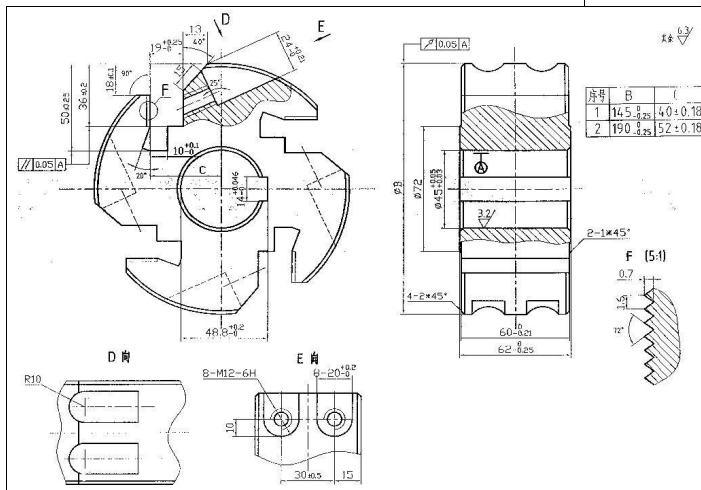
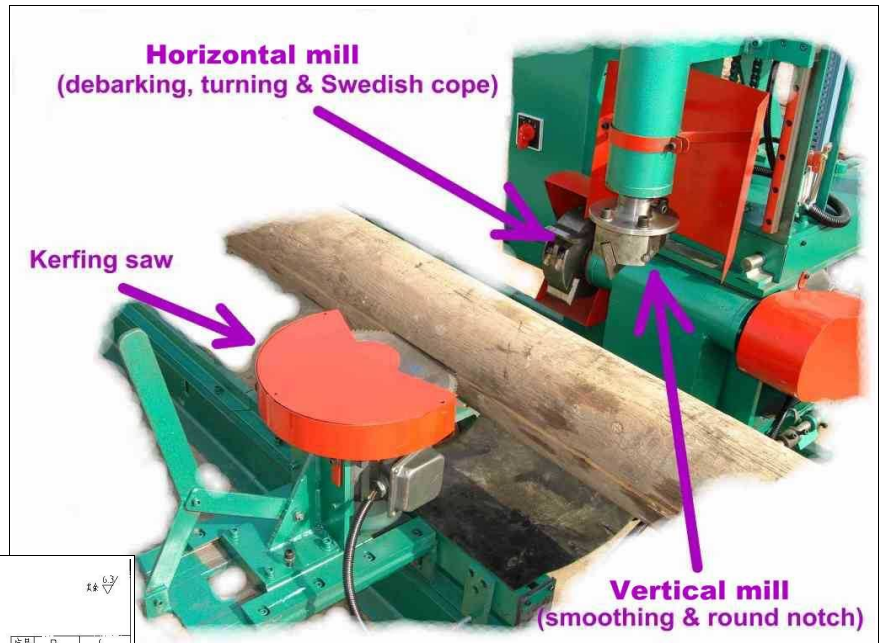
Log lathe LL-41 has two types of milling devices, we call one Horizontal Mill and second Vertical Mill.

Horizontal Mill a.k.a. rough cutter is named this way because the spindle with cutter head is placed horizontally.

Vertical Mill a.k.a. fine cutter is named this way because the spindle with cutter head is placed vertically.

Cutter heads for Horizontal Mill

Purpose: debarking, rounding, milling of Swedish cope



A cutter head is installed on horizontal spindle driven by 11KW (14.74HP) electric motor (3 phase, 480V/60Hz or 380V/50Hz)

- ◇ The cutter head accommodates 4 knives
- ◇ Each cutter head goes with 4 knives and 4 inserts by default
- ◇ All knives can be sharpened using electric bench grinder.

Woodlandia can supply 3 different size cutter heads for Horizontal Mill:

	Cutter head dia	Note
1	145 mm (5.71")	Four 60mm knives installed into 145mm cutter head will form 178mm diameter. This will allow milling of cope for diameters: 8" – 9½" (200 – 240mm). In order to mill cope for diameter less than 8" it is necessary to use smaller knives.
2	195 mm (7.68")	Four 60mm knives installed into 190mm cutter head will form 225mm diameter. This will allow milling of cope for diameters: 9½"-12" (240 - 320mm)
3	245 mm (9.65")	Four 60mm knives installed into 245 mm cutter head will form 280mm diameter. This will allow milling of cope for diameters: 11"-14" (280 - 356mm)

Woodlandia recommends to buy all 3 cutter heads for Horizontal Mill of LL-41. This way the owner will be able to switch between different log diameters and provide his clients with more options.



Cutter heads for Vertical Mill

Since 2010 Woodlandia makes 1 versatile cutter head for Vertical Mill of LL-41. This cutter head works for whole range of diameters 6 - 12.5" (160-320mm).

Purpose:

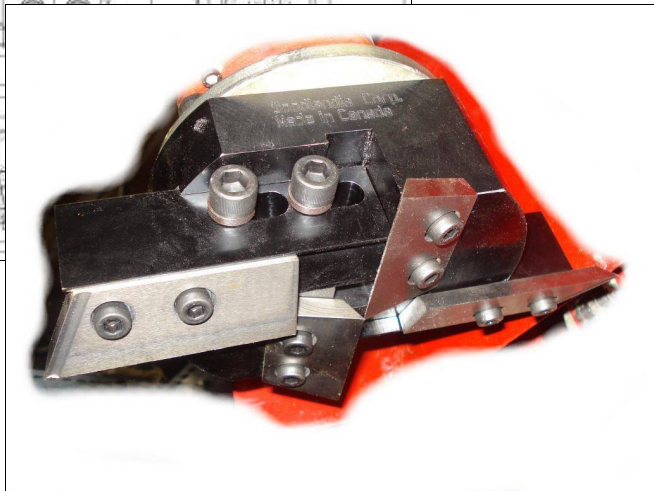
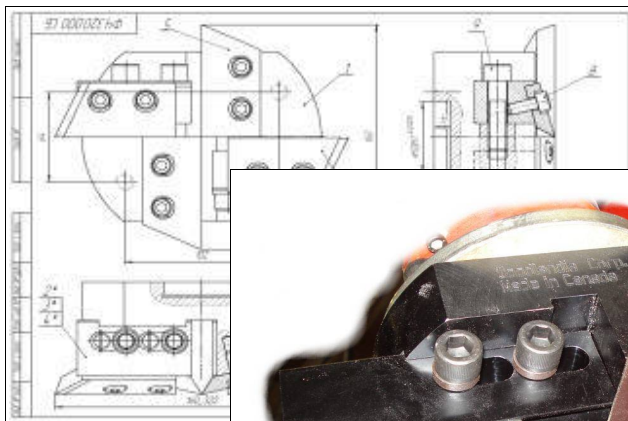
- surface finishing (smoothing)
- notching
- surface flattening

Set content:

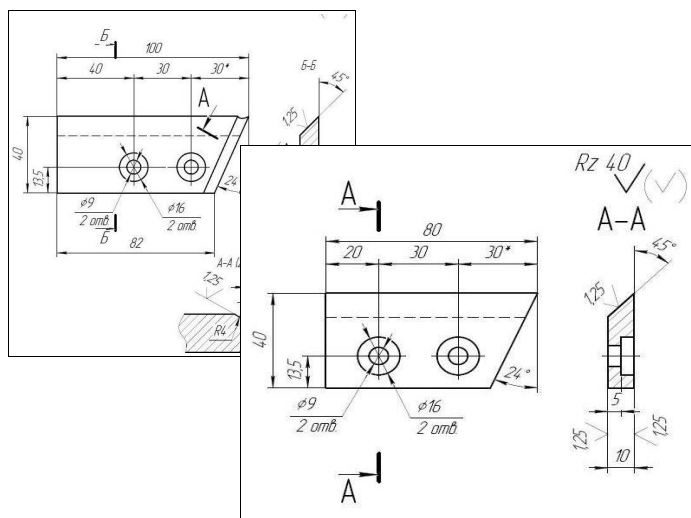
- cutter head body
- 3 pairs of knife holders
- 2 finishing knives (80mm)
- 2 cutting-finishing knives (80mm)
- 2 cutting-finishing knives (100mm)
- bolts & locking washers

Features:

- High level of safety
- One cutter head for wide range of diameters (160-320mm)
- Better finishing quality (4 knives vs. 2 knives on older cutter head)
- Less load on motor
- Simple knives
- Easy to replace knives in the head
- Easy to sharpen knives
- Easy to adjust
- Robust & reliable
- Made in Canada

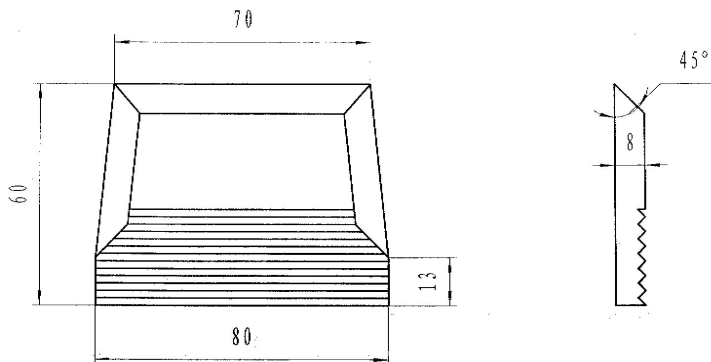


Knives for vertical mill



Spare knives can be ordered from Woodlandia or made in local machine shop.

Knives for horizontal mill



Spare knives can be ordered from Woodlandia or made by the owner from a knife bar available from the market (USA & Canada).

